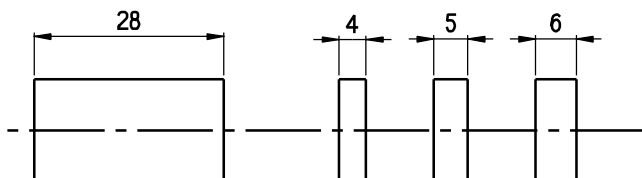
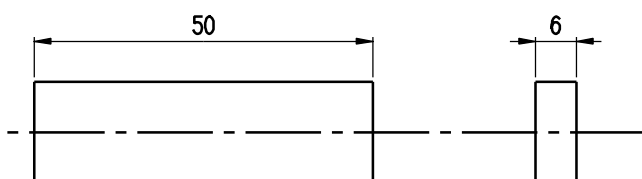


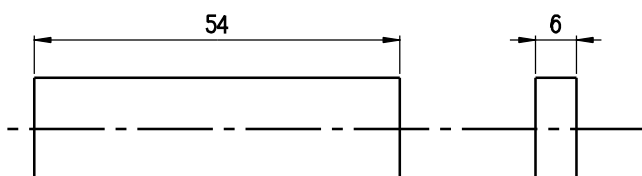
Punzone larghezza 4 altezza 25 CH087.4
 Punzone larghezza 5 altezza 25 CH087.5
 Punzone larghezza 6 altezza 25 CH087.6



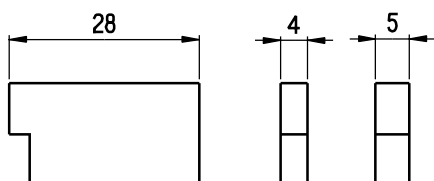
Punzone larghezza 4 altezza 28 CH086.4
 Punzone larghezza 5 altezza 28 CH086.5
 Punzone larghezza 6 altezza 28 CH086.6



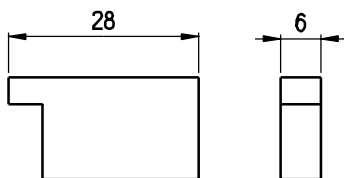
Punzone superiore K20
 larghezza 6 lunghezza 50 CT087.6
 Punzone superiore molibdeno
 larghezza 6 lunghezza 50 CT087.6M



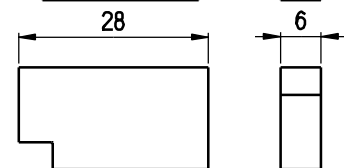
Punzone inferiore K20
 larghezza 6 lunghezza 54 CT086.6
 Punzone inferiore molibdeno
 larghezza 6 lunghezza 54 CT086.6M



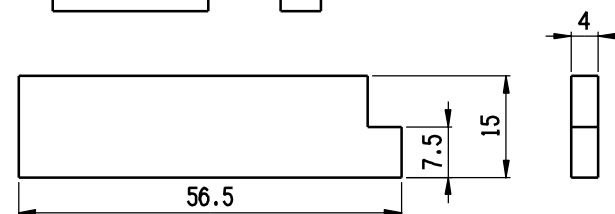
Punzone a scalino h 4 CH080
 Punzone a scalino h 5 CH081



Punzone a scalino inferiore h 6 CH082B

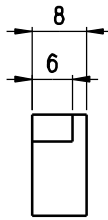
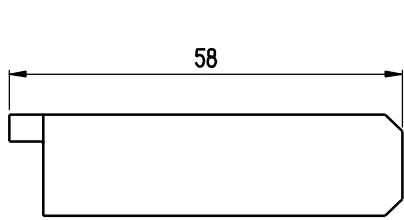


Punzone a scalino superiore h 6 CH083B

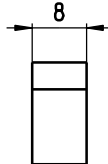
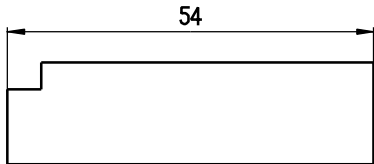


Punzone a scalino superiore h 4 CT087.6K-SC-ESS4R

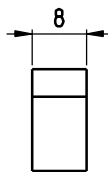
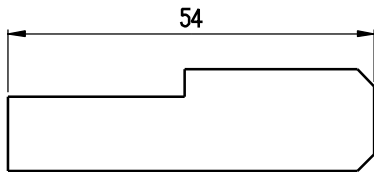
CASTECH SRL	SCALA 1 : 1	DISGNATO DA: Diego Fin	DATA 07/11/14	N° PEZZI PER MACCHINA	MACCHINA DI APPARTENEZA	SEMILAVORATO DI APPARTENEZA	
		VERIFICATO DA: Diego Fin			CODICE: ESS**	CODICE:	
MATERIALE					TRATTAMENTI		
DESCRIZIONE					N° DISEGNO TAVCON06	REVISIONE 5	



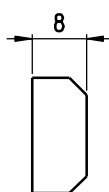
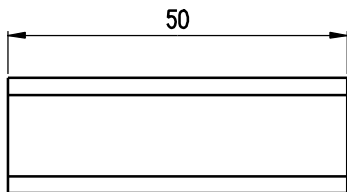
Punzone a scalino h 8 inf.
(versione lunga) CT082S.8M



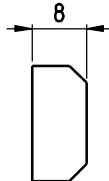
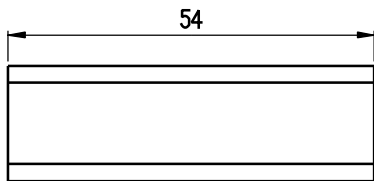
Punzone a scalino h 8 sup.
(versione lunga) CT083S.8M



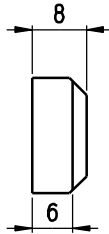
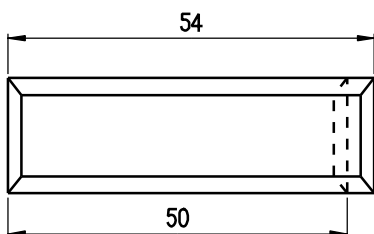
Punzone speciale CT083C.8M



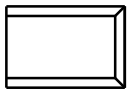
Punzone inf. a fix trap. CT087T.8M



Punzone sup. a fix trap. CT086T.8M



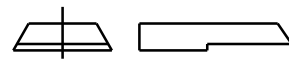
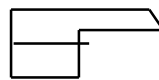
Punzone sup. L54 fix trap. CT086T_8M_SM
Punzone INF. L50 fix trap. CT087T_8M_SM



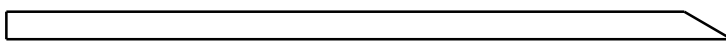
Coltello CH058



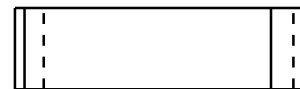
Coltello CT058.1



Coltello CT058-AA-01



Coltello taglio sfrido CT057-AE-00



Coltello taglio sfrido CH057C.1

CASTECH SRL	SCALA 1 : 1	DISEGNATO DA: Diego Fin	DATA 31/01/14	N° PEZZI PER MACCHINA	MACCHINA DI APPARTENEZA	SEMILAVORATO DI APPARTENEZA
		VERIFICATO DA: Diego Fin			CODICE:	CODICE:
MATERIALE					TRATTAMENTI	
DESCRIZIONE					N° DISEGNO	REVISIONE