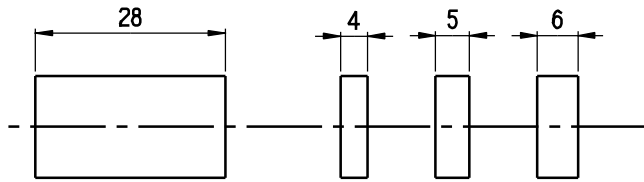
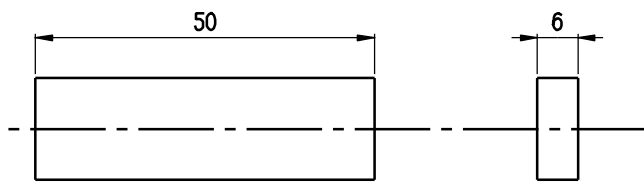


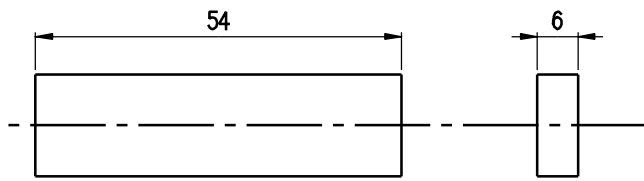
Tool width 4 length 25 CH087.4
 Tool width 5 length 25 CH087.5
 Tool width 6 length 25 CH087.6



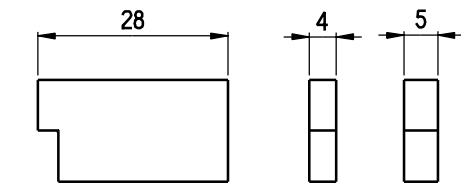
Tool width 4 length 28 CH086.4
 Tool width 5 length 28 CH086.5
 Tool width 6 length 28 CH086.6



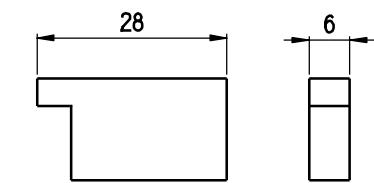
Upper Tool tungsten
 width 6 length 50 CT087.6
 Upper Tool molibdenum
 width 6 length 50 CT087.6M



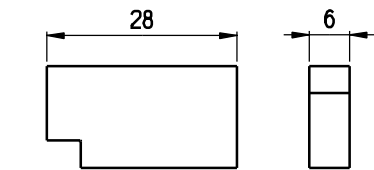
Lower Tool tungsten
 width 6 length 54 CT086.6
 Lower Tool molibdenum
 width 6 length 54 CT086.6M



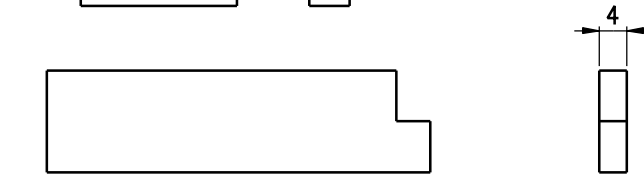
Step Tool width 4 CH080
 Step Tool width 5 CH081



Lower step Tool width 6 CH082B

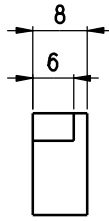
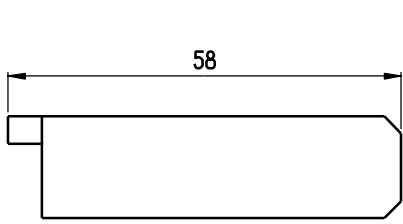


Upper step Tool width 6 CH083B

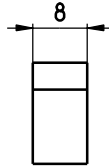
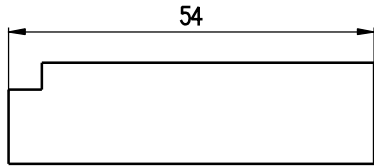


Upper step Tool width 4 CT087.6K-SC-ESS4R

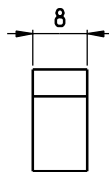
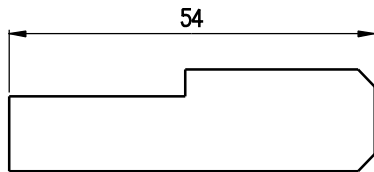
CASTECH SRL	SCALA 1 : 1	DISEGNATO DA: Diego Fin	DATA 07/11/14	N° PEZZI PER MACCHINA	MACCHINA DI APPARTENEZA CODICE: ESS**	SEMILAVORATO DI APPARTENEZA CODICE:
		VERIFICATO DA: Diego Fin				
MATERIALE					TRATTAMENTI	
DESCRIZIONE Spares table page 1					N° DISEGNO TAVCON06	REVISIONE 5



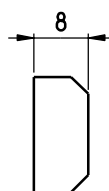
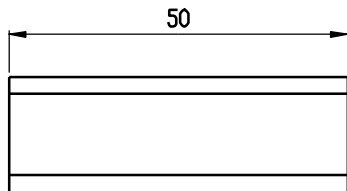
Lower step Tool width 8
CT082S.8M



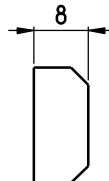
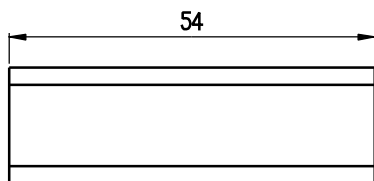
Upper step Tool width 8
CT083S.8M



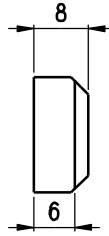
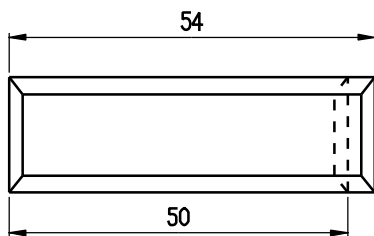
Special Tool CT083C.8M



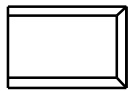
Lower Tool trap. fixing CT087T.8M



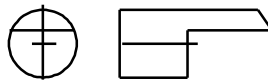
Upper Tool trap. fixing CT086T.8M



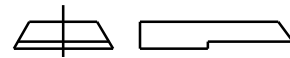
Upper Tool trap. L 54 fixing CT086T_8M_SM
Lower Tool trap. L 50 fixing CT087T_8M_SM



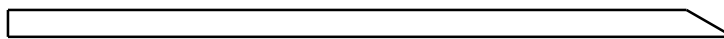
Strip blade CH058



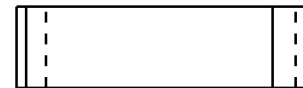
Strip blade CT058.1



Strip blade CT058-AA-01



Trimming blade CT057-AE-00



Trimming blade CH057D

CASTECH SRL	SCALA 1 : 1	DISEGNATO DA: Diego Fin	DATA 31/01/14	N° PEZZI PER MACCHINA	MACCHINA DI APPARTENEZA	SEMI-LAVORATO DI APPARTENEZA
		VERIFICATO DA: Diego Fin			CODICE:	CODICE:
MATERIALE					TRATTAMENTI	
DESCRIZIONE Spares table page 2					N° DISEGNO	REVISIONE